

Note: Need to make mirror image of these parts for opposite side of Droid

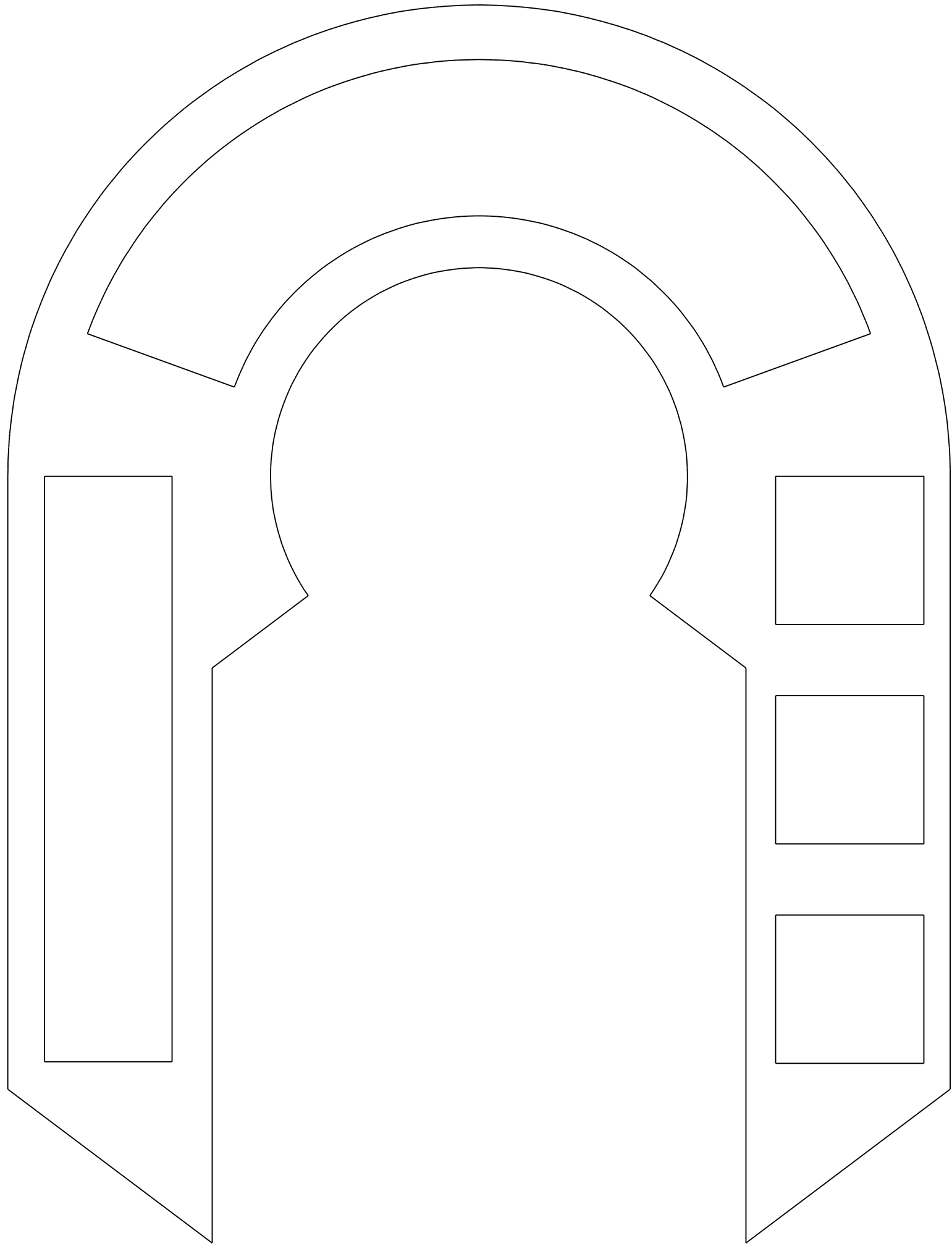
1" x 1"
square

CS:R Horseshoes - V1.1

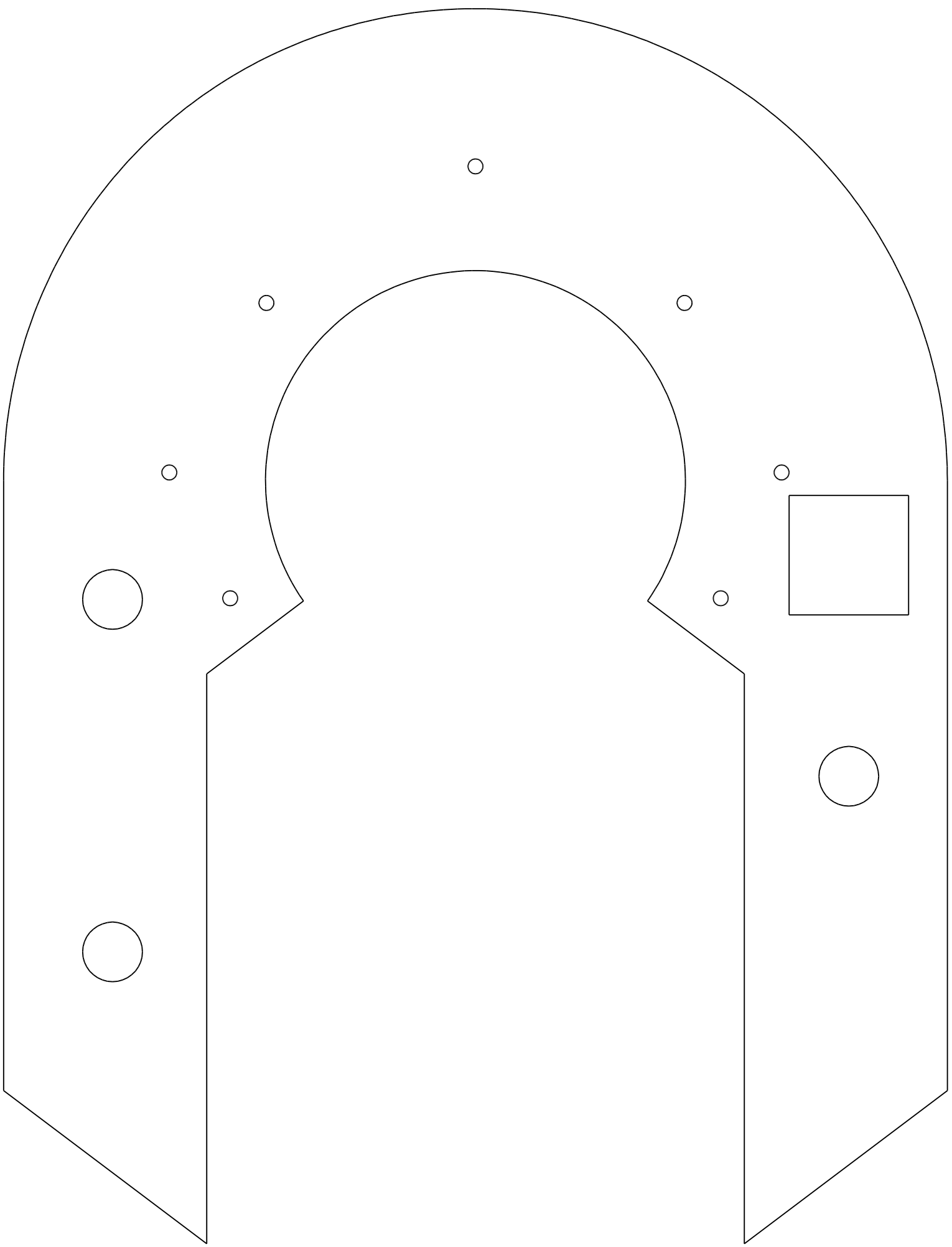
.188 Parts - Dwg 1/3

Copyright Media-Conversions - Released for non-commercial use ONLY!

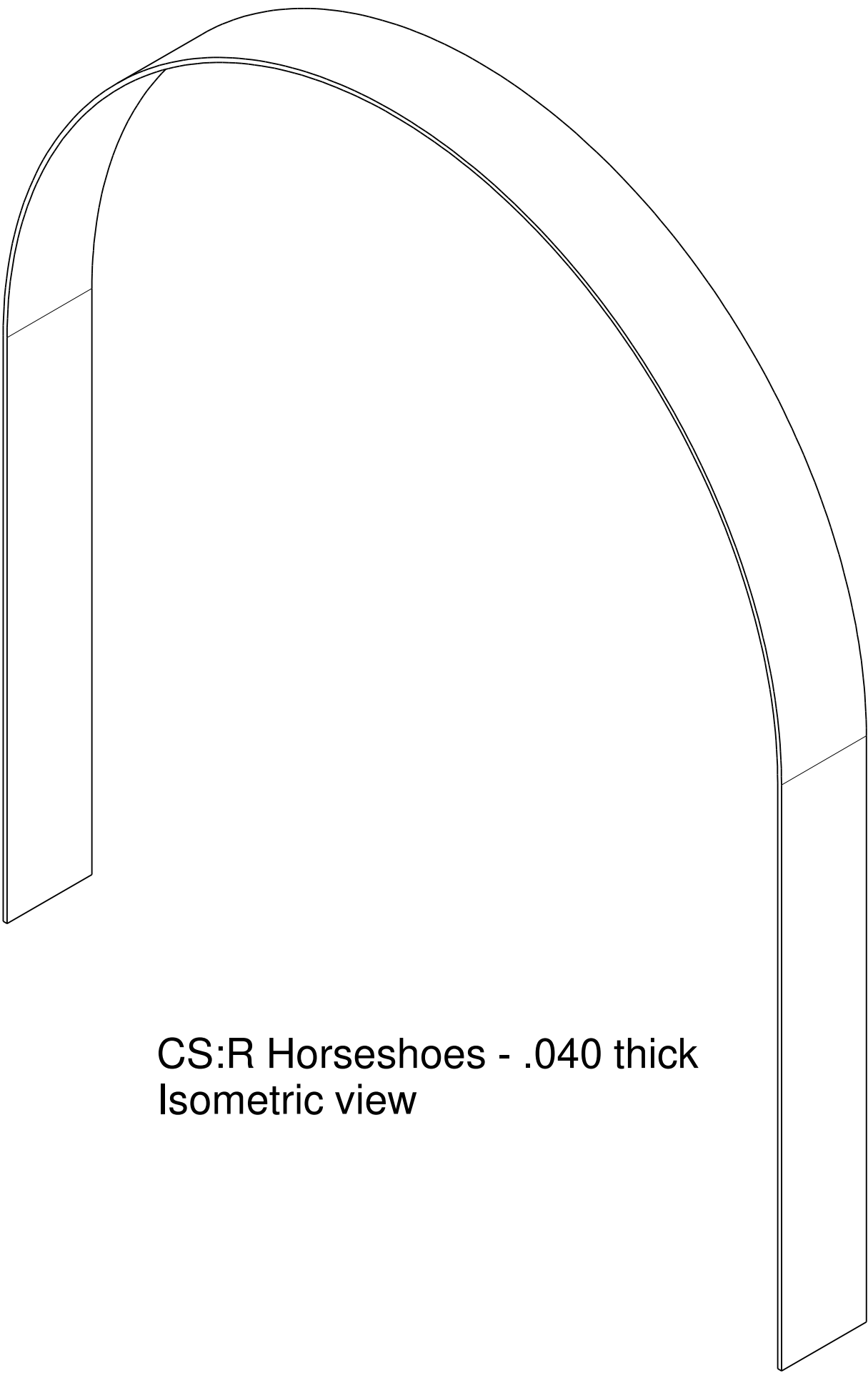
DRAWN	DATE	<div><div>C</div><div>Media</div><div>Conversions</div></div>			
CHECKED					
QA					
MFG					
APPROVED		SIZE C	FSCM NO.	DWG NO.	REV
SCALE		SHEET			



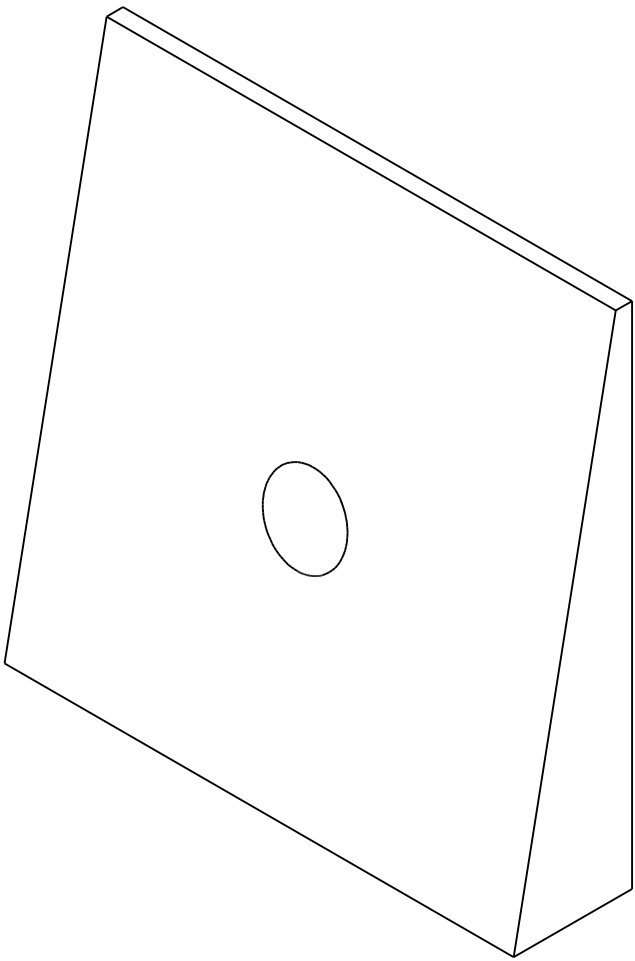
CS:R Horseshoes - .125 thick
Layer 3 - make 2



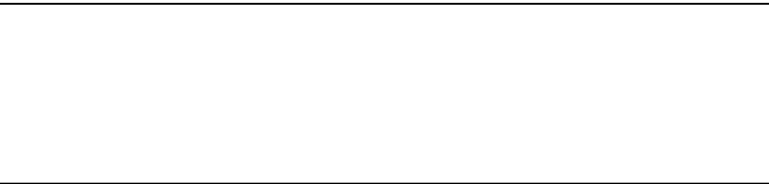
CS:R Horseshoes - .125 thick
Shim - make 2



CS:R Horseshoes - .040 thick
Isometric view



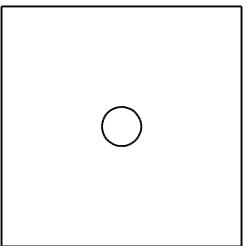
CS:R Horseshoes
Wedge (3D Printed) - make 2



CS:R Horseshoes - .040 thick
Skin Edge - make 4



CS:R Horseshoes - .040 thick
Skin Top - make 2



CS:R Horseshoes - .040 thick
Rectangular & Square Filler - make 2

1" x 1"
square

CS:R Horseshoes - V1.1
.125 & .040 Parts - Dwg 2/3

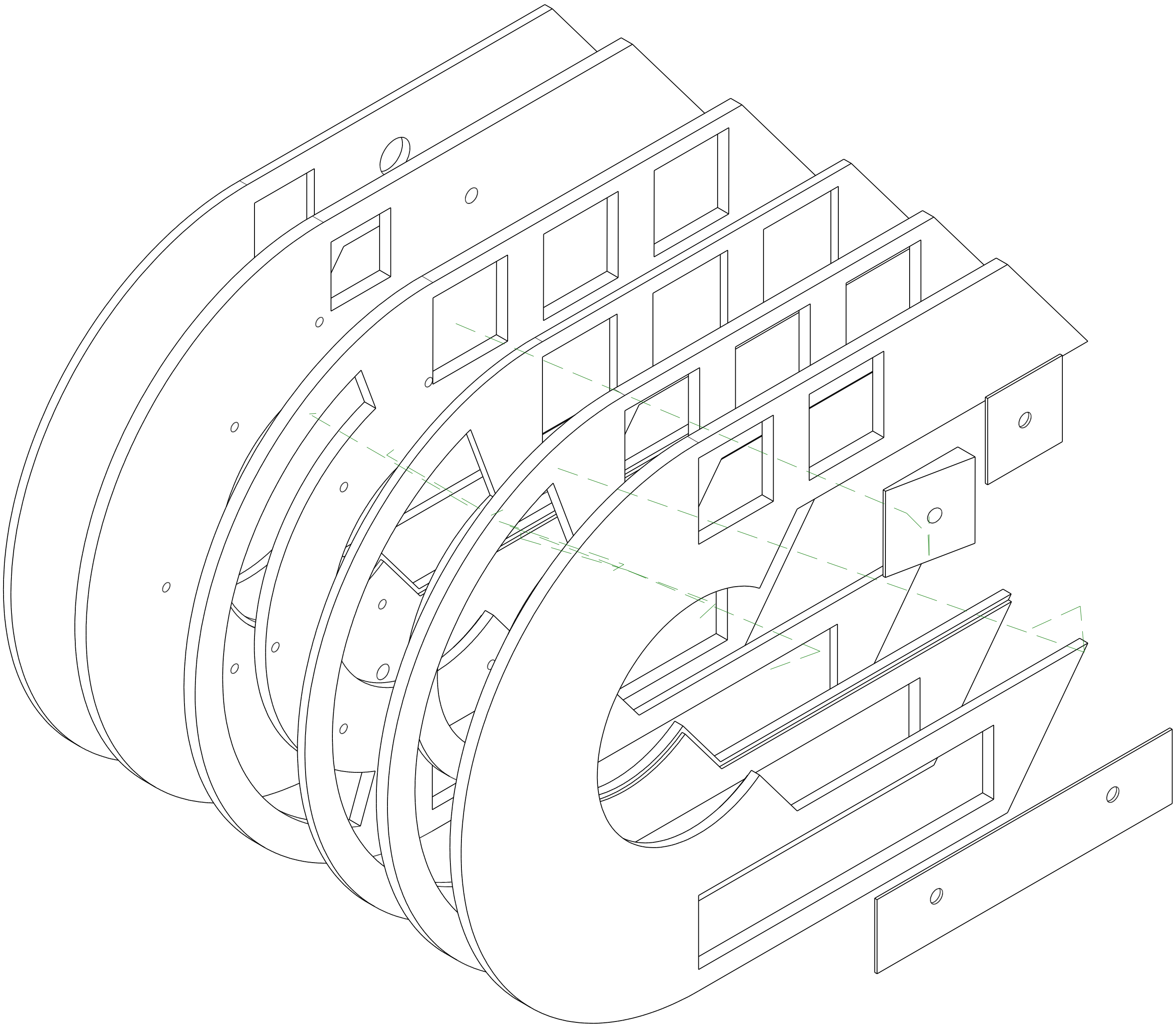
Copyright Media-Conversions - Released for non-commercial use ONLY!

DRAWN	DATE	<div>MediaConversions</div>			
CHECKED					
QA					
MFG					
APPROVED		SIZE C	FSCM NO.	DWG NO.	REV
SCALE		SHEET			

Drawing Set Change Log

V1.0 - initial release 6/30/19

V1.1 - added outer skins 7/1/19



CS:R Horseshoes - V1.1
Assembly Exploded view- Dwg 3/3

1" x 1"
square

Copyright Media-Conversions - Released for non-commercial use ONLY!

DRAWN	DATE	<div>CMediaConversions</div>				
CHECKED						
QA						
MFG						
APPROVED		SIZE C	FSCM NO.	DWG NO.		REV
		SCALE			SHEET	